

BURNOPFIELD PLAY CARE NEWSLETTER

May - August 2019



ISSUE
2

Welcome to our second Play Care Newsletter. It's taken a little time to get our second issue published.... but we are now back on track!

We have had loads going on since our last Newsletter and we plan on keeping fun events happening.... we hope you will take part in making them special. Remember, you don't need to attend Burnopfield Primary School to take part in our events - we welcome **EVERYONE!**



Fundraising events are a vital source of funding for Play Care, which we hold throughout the year.

November last year, we were awarded with a cheque for £3071.41 from Burnopfield CO-OP.



The 'CO-OP local community funding' helps make a real difference to local causes and we are overwhelmed with the generosity of the Burnopfield community who chose Play Care for their 'Local Cause'.

Proceeds raised from past fundraising events have been used towards funding trips, new high-vis vests, coach hire and providing children with new IT equipment. **Every penny raised goes back in to providing for the children who use the Play Care facilities. Thank You!**

Play Care Availability



We have limited space in our room at Play Care. As a result, we can only hold a certain amount of children per session to ensure we follow child/adult ratios for our allocated space. Advance booking is always recommended and we do not guarantee a space unless booked in. Spaces fill up fast for trips and outings!

Play Care has some very **EXCITING** news to share with you

We are super proud of our recent **OFSTED** inspection, and because of all the hard work and dedication from our team, we have been awarded a **GOOD PROVIDER** status.



We would like to thank everyone involved for your commitment and hard work to make this award happen. We have always

prided ourselves on providing a safe and secure environment for children out of school hours.

• Since starting maternity leave, Jodie and her family have welcomed a beautiful baby girl into the world. Congratulations!

• Kirstie is back with us until September PLUS we have a new recruit, Samia. Samia joined us on 4th February on an apprenticeship from Derwentside College, she loves working with our children and has settled in very well.



Past Events

We have had great fun at past events held at Play Care.

- **Burns Night** - children tried traditional Haggis Neeps and Tatties as well as learning interesting facts about Robert Burns.

- It was the year of the PIG for **Chinese New Year** this year. Children coloured pictures and made Chinese dragons.

- We LOVE **Valentines Day**. There were plenty heart shaped activities including decorating heart shaped cakes.



- During **February Half Term** we held colour themes throughout the week:
 - Monday was RED day. We made models, decorated red cakes, ate red apples and mixed red berry milkshake.
 - Tuesday morning we had a trip to the cinema to see Lego Movie 2 then on the afternoon we held DINOSAUR themed activities.

- Wednesday was a SPOTTY day. Everyone went a bit 'dotty wearing spotties'!

- Thursday was a super cute ANIMAL themed day. We brought in soft toys, made collars, headbands and masks.
- Friday morning, the children got involved in creating tiled mosaics and in the afternoon we all made bird food.

- To celebrate **St. David's Day** we made daffodils in a fun art & craft session.



- **Easter Half Term** was kicked off with a fun Disco when school broke up on Friday. We held another 2 weeks of themed activities including Disney, mermaids & pirates, nature & insects, fixing & mending, PJ's & making dream catchers, arts & crafts, egg hunts, cooking and a fun game of pin the tail on the Easter Bunny! What fun!



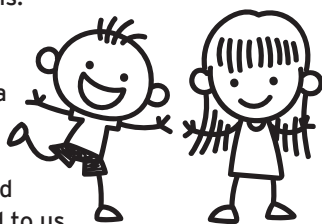
Our **Easter colouring competition** was won by Alfie and Erin. Well done, such an eggs-cellent effort!

Kid's Corner

Play Care would love to hear your suggestions for events or activities over the summer months.

If you can suggest an idea which we can use, then you will be in with a chance of winning a special prize!

Suggestions can be written down and handed to Play Care staff or emailed to us.



Dates for your Diary

You can keep up to date with future events by following our Facebook page and by checking our website.

May Spring Holiday 27th - 31st May 2019:

- Monday: Bank Holiday (Play Care is CLOSED).
- Tuesday: Arts & Crafts.
- Wednesday: Gidside Trip.
- Thursday: Cooking.
- Friday: Bikes & Scooters (Please send in helmets).

June 16th - Special Person's Day:

Card making and activities the preceding week.

Friday 21st June - School Closed Inset Day:

Trip to Beamish Museum.

W/C 8th July is Health & Fitness Week at School.

Play Care will also be focusing on Health & Fitness this week. Activities advised nearer the time.

School breaks up on Friday 19th July and re-opens

Tuesday 3rd September 2019. Play Care is open for the Summer Holidays for half or full day sessions.

Spaces are limited and fill up fast!

Themed weeks during the holidays:

Week 1: People who help us. Trip to Safety Works.

Week 2: The Jungle. Trip to Sunderland Winter Garden & Museum

Week 3: Construction. Trip to Centre 4 Life.

Week 4: Magical & Mythical. Magical visitor to Play Care.

Week 5: The Beach. Trip to Blue Reef Aquarium/Beach.

Week 6: Discovery Week. Trip to Discovery Museum.

Dates and exact activities to be advised nearer the time. Keep up to date on our Facebook Page and Website.

**Please note there will be an additional fee for trips which have entrance fees. Travel is paid for by funding.*

Costs of Sessions

Half Day session: £8.50/£9.00 (member/non member).

Full Day session: £16.50/£17.50 (member/non member).

Membership is optional. £17 per Child or £22 per Family.

Payable 3 times a year, giving you the discounted rate per session. A possible saving of £200 per year.

Contacting Play Care

Mobile: 07914 780804 (contactable during office hours)

Email: burnopfieldplaycare@hotmail.co.uk

Website: www.burnopfieldplaycare.co.uk

Facebook: Burnopfield Play Care



Play Care is a registered Charity - 1156234, DBS checked and OFSTED registered as a GOOD PROVIDER - EY542141.

Our friendly Play Care staff are all qualified and experienced in Childcare and are up to date with Safeguarding and First Aid training. Play Care is run by a small committee of unpaid volunteers who oversee finances, planning of events, structure and making sure everything is in order to ensure we have a safe and suitable environment for your children.

Newsletter design by www.daintybeedesign.co.uk